

## SSB SEALED BEAM LOAD CELL (U.S. & METRIC)

### FEATURES & BENEFITS

- Proprietary Interface temperature compensated strain gages
- Environmentally sealed
- 0.01% non-repeatability
- 0.0008%/°F temp. effect on output
- Tension and compression
- Compact size

### SPECIFICATIONS

CAPACITY	50 - 5K lbf (222 - 22.2K N)		10K lbf (44.5K N)	
<b>ACCURACY – (MAX ERROR)</b>				
Nonlinearity – %FS			±0.03	
Hysteresis – %FS	±0.02		±0.03	
Non-repeatability – %RO			± 0.01	
Creep, in 20 min – %			± 0.025	
<b>TEMPERATURE</b>				
Compensated Range	°F	0 to +150		
	°C	-15 to +65		
Operating Range	°F	-65 to +200		
	°C	-55 to +90		
Effect on Output – % / °F MAX			±0.008	
Effect on Zero – %RO / °F MAX			±0.15	
<b>ELECTRICAL</b>				
Rated Output – mV/V (Nominal)			3.0	
Zero Balance – %RO			±1.0	
Bridge Resistance – Ohm (Nominal)			350	
Excitation Voltage – VDC MAX			15	
Insulation Resistance – Megohm			5000	
<b>MECHANICAL</b>				
Calibration			Compression	
Safe Overload – %CAP			±150	
<b>NATURAL FREQUENCY/DEFLECTION</b>				
lbf	N	Deflection		Nat. Freq. (Hz)
		in	mm	
50	222	0.004	0.1016	2130
100	445	0.004	0.1016	2400
250	1.11K	0.005	0.127	3000
500	2.22K	0.010	0.254	2220
1K	4.45K	0.013	0.3302	1970
2.5K	11.1K	0.025	0.635	1720
5K	22.2K	0.022	0.5588	1400
10K	44.5K	0.026	0.6604	1620
Material	50 - 2.5K lbf	Aluminum		
	222 - 11.1K N			
	5K - 10K lbf	Alloy Steel		
	22.2K - 44.5K N			

### STANDARD CONFIGURATION



Model SSB (shown)

### OPTIONS

- Standardized output
- Cable length
- Transducer Electronic Data Sheet (TEDS)
- Special temperature range
- Custom calibration
- Add connector to cable

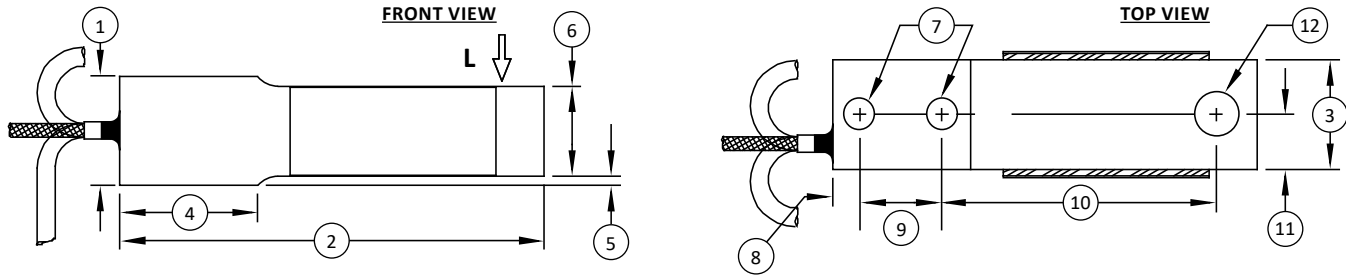
### ACCESSORIES

- Instrumentation

### CONNECTOR OPTIONS

- 10 ft (3 m) integral cable

## SSB SEALED BEAM LOAD CELL (U.S. & METRIC)

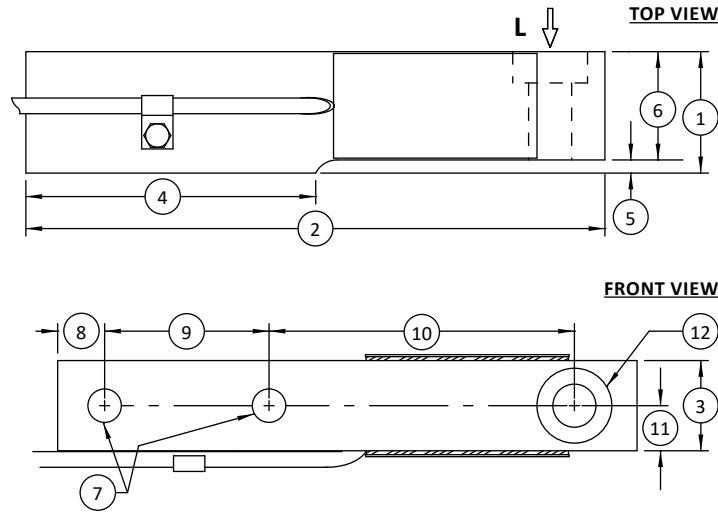


Notes:  
\* L indicates load direction

### DIMENSIONS

See Drawing	CAPACITY									
	U.S. (lbf)	Metric (N)	U.S. (lbf)	Metric (N)	U.S. (lbf)	Metric (N)	U.S. (lbf)	Metric (N)	U.S. (lbf)	Metric (N)
	in	mm	in	mm	in	mm	in	mm	in	mm
(1)	0.98	24.9	0.98	24.9	0.98	24.9	1.00	25.4	1.50	38.1
(2)	2.38	60.5	2.38	60.5	2.38	60.5	3.88	98.6	5.00	127
(3)	0.50	12.7	0.50	12.7	0.50	12.7	1.00	25.4	1.00	25.4
(4)	0.97	24.6	0.97	24.6	0.97	24.6	1.25	31.8	1.75	44.5
(5)	0.11	2.8	0.15	3.9	0.11	2.8	0.09	2.3	0.10	2.5
(6)	0.82	20.8	0.73	18.4	0.82	20.8	0.82	20.8	1.36	34.5
(7)	Ø0.17	Ø4.3	Ø0.17	Ø4.3	Ø0.17	Ø4.3	Ø0.28	Ø7.1	Ø0.41	Ø10.3
(8)	0.25	6.4	0.25	6.4	0.25	6.4	0.25	6.4	0.38	9.7
(9)	0.50	12.7	0.50	12.7	0.50	12.7	0.75	19.1	1.00	25.4
(10)	1.31	33.3	1.31	33.3	1.31	33.3	2.50	63.5	3.25	82.6
(11)	0.25	6.4	0.25	6.4	0.25	6.4	0.50	12.7	0.50	12.7
(12)	Ø0.17	Ø4.3	Ø0.17	Ø4.3	Ø0.17	Ø4.3	Ø0.40	Ø10.2	Ø0.40	Ø10.2

## SSB SEALED BEAM LOAD CELL (U.S. & METRIC)



**Notes:**  
\* L indicates load direction

### DIMENSIONS (CONTINUED)

See Drawing	CAPACITY			
	U.S. (lbf)	Metric (N)	U.S. (lbf)	Metric (N)
	2.5K - 5K	11.1K - 22.2K	10K	44.5K
	in	mm	in	mm
(1)	1.45	36.8	1.94	49.3
(2)	8.00	203.0	9.25	235.0
(3)	1.44	36.6	1.44	36.6
(4)	3.75	95.0	4.63	117.0
(5)	0.10	2.5	0.21	5.3
(6)	1.35	34.3	1.73	44
(7)	Ø0.53	Ø13.0	Ø0.53	Ø13.5
(8)	0.75	19.0	0.75	19.0
(9)	2.50	63.5	2.63	66.8
(10)	3.88	98.6	4.88	124.0
(11)	0.72	18.3	0.72	18.3
(12)	Ø0.69	Ø17.5	Ø0.69	Ø17.5